

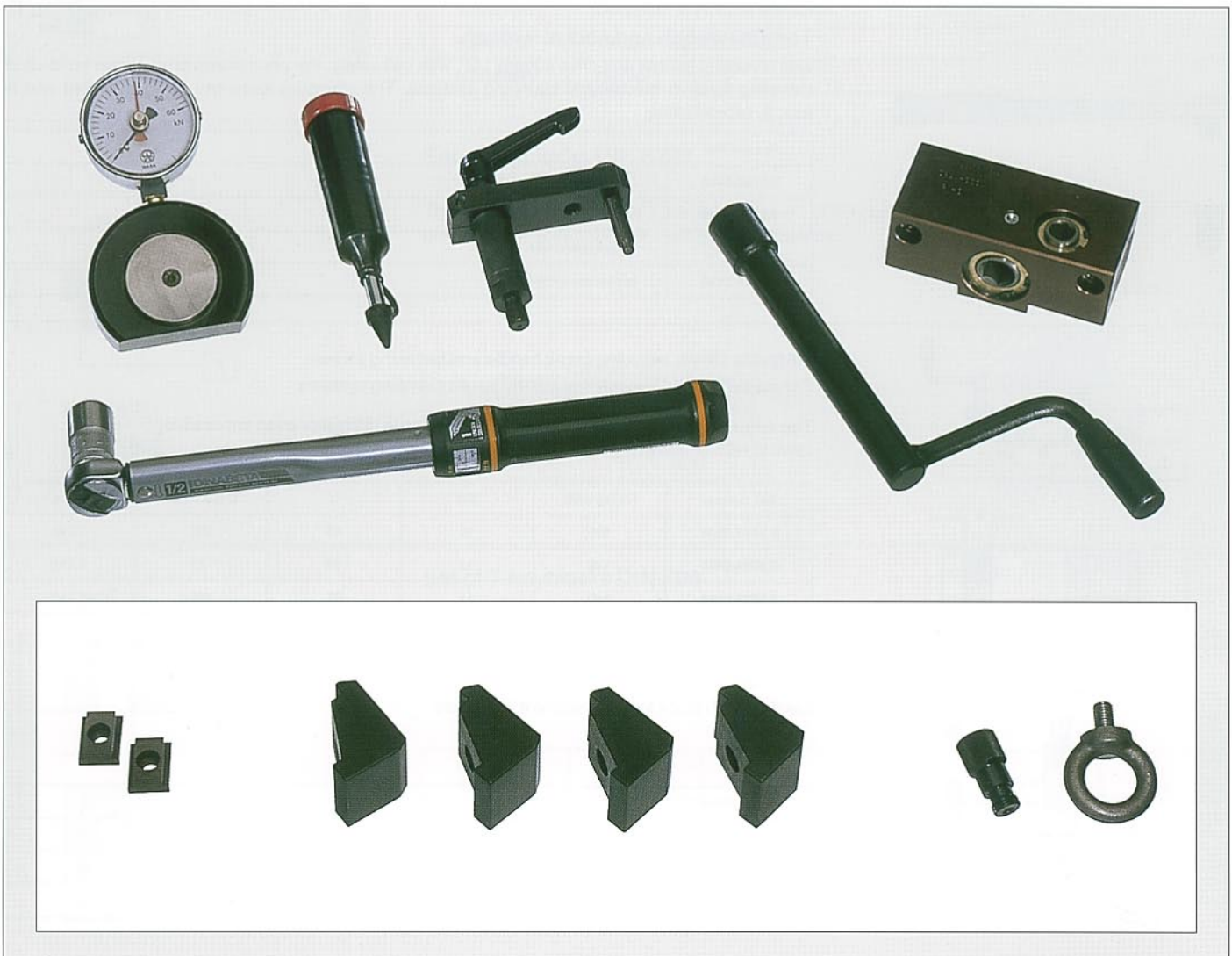
Positioning and fastening elements ensure optimum mounting of clamping systems on machine beds, pallets, cubes and grid plates.

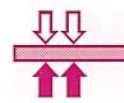
Practical accessories simplify workholding, improve handling and operation and facilitate maintenance work.

This product group is continuously increased by design and development.

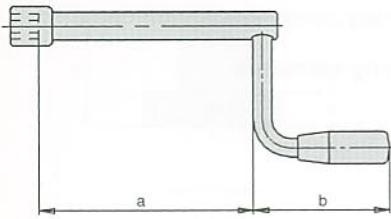
The range of accessories comprises:

- ◆ Positioning and fastening elements
- ◆ Operating elements
- ◆ Angular drives
- ◆ Service material
- ◆ Other accessories





for version mech.-hydr.

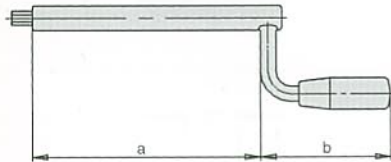


Crank handle

Ref. number	For jaw width	SW	Crank throw	a	b
4.2056.0020	100	14	80	144	89
4.2056.0019	125	17	100	156	89
4.2056.0021	160	19	125	202	112
4.2056.0004*	200	24	200	22	140

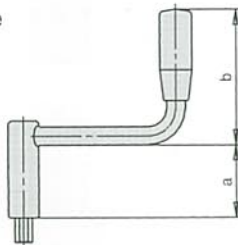
5.2057.0004* pertaining extension

for version hydr.-hydr.



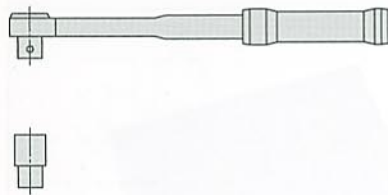
Ref. number	For jaw width	SW	Crank throw	a	b
4.2056.0022	100/125	8	50	153	89
4.2056.0023	160	10	80	192	105
4.2056.0021	200	19	125	202	112

for angular drive



Ref. number	For jaw width	SW	Crank throw	a	b
4.2056.0015	100	10	100	48	89
4.2056.0016	125	12	125	55	112
4.2056.0017	160	14	160	66	112
4.2056.0004*	200	24	200	22	140

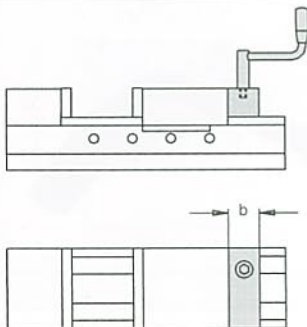
7.3025.2138* pertaining crank insert



Torque wrench and socket wrench

with reversing ratchet and drive square 1/2", with ball safety. For precise and progressive build-up of clamping force in mechanical clamping systems. The clamping force can be preselected and is exactly reproducible.

Ref. number	
9.3792.6610	Torque wrench 20–100 Nm
9.3792.6620	Torque wrench 40–200 Nm
1.3124.0017	Socket wrench SW 17
1.3124.0019	Socket wrench SW 19

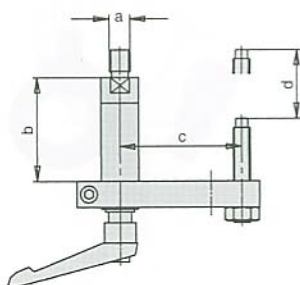


Angular drive including crank handle and fastening screws.

For machine vices and mechanical-hydraulic clamping systems.

The angular drive is used when a normal operation is difficult or even impossible. Ideal to retrofit. Mounting instructions included in the delivery of parts.

Ref. number	For jaw width	SW	b	Crank throw	Mass
9.3294.0504	100	10	45	100	1,2 kg
9.3294.0604	125	12	53	125	2,3 kg
9.3294.0704	160	14	65	160	4,3 kg

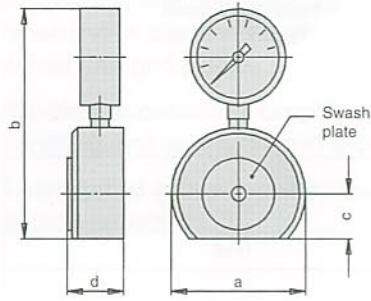


Precision workpiece stop

pivoting, with quick lock, adjustment in 2 levels

Ref. number	a	b	c	d
9.3291.0201	M 12	61	70	46
9.3291.0301	M 12	61	105	46
9.3291.0401	M 16	81	100	66

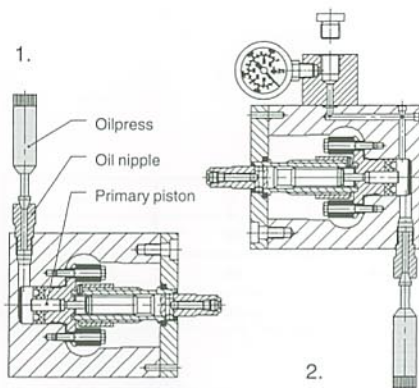
Load cell



For regular checking of the clamping force of hydraulic and mechanical clamping systems. Power transmission must be vertical, above the swash plate center (observe dimension C).

Ref. number	Indicating range kN	a	b	c	d	For jaw width
2.9501.0001	0 – 60	88	150	29	37	100/125
2.9501.0002	0 – 100	138	200	54	40	160/200

Oil nipple and oilpress



For machine vices and clamping systems, mechanical-hydraulic

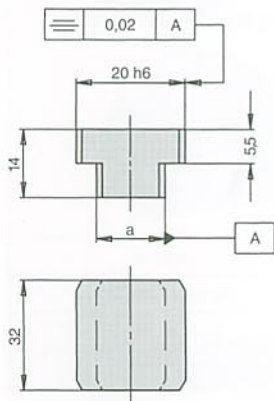
Application :

1. Press primary piston into home position
2. Fill slide with pressure gauge with oil. Oil must be free from bubbles.

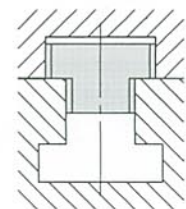
Ref. number	
5.3090.0001	Oil nipple for size 100, 125 and 160 mm
5.3090.0002	Oil nipple for size 200 mm
2.7016.0001	Oilpress

Set of keyblocks DIN 6323

The keyblocks are used for a precise alignment of the clamping element on the machine bed. Simple insertion from the side.



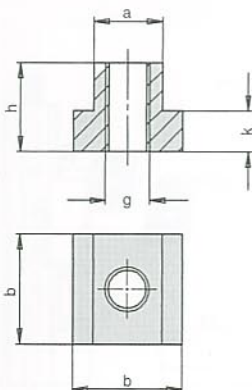
Example for application



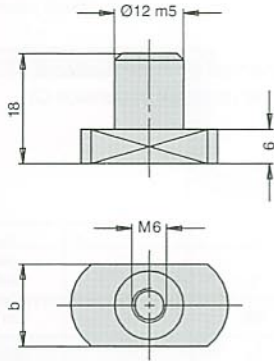
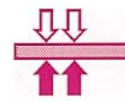
Ref. no. for 2 pieces = 1 set	Slot in the bed a
9.3917.4121	14 h6
9.3917.4141	18 h6

Set of T-keyblocks DIN 508

Application in connection with screws and clamping claws. Used for fastening machine vices and clamping systems on machine beds with T-slots.



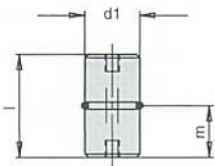
Ref. number for 4 pieces	a	b	g	h	k
9.3777.3211	14	22	M12	16	8
9.3777.3231	18	28	M12	20	10
9.3777.3311	18	28	M16	20	10



Nut for grid holes

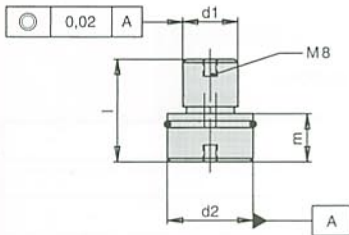
For locating clamping systems with positioning holes on machine beds with T-slots.

Ref. number for 1 piece	b
5.0508.0089	14 h6
5.0508.0091	18 h6

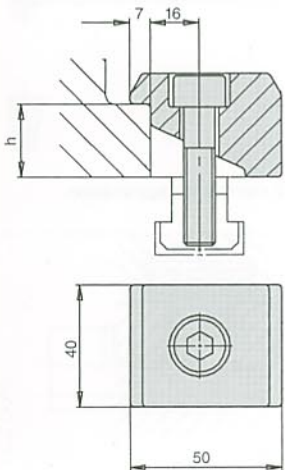


Centering bolt for central hole

For centering base plates and fixture cubes on pallets.



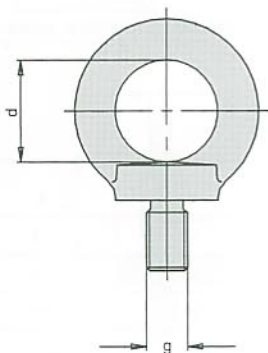
Ref. number	d_1	d_2	l	m
5.1044.0001	32 h6	-	60	30
5.1044.0002	32 h6	50 h6	50	25
5.1044.0003	50 h6	-	60	30



Set of clamping claws with screws

For safe clamping of machine vices and clamping systems with clamping edge.

Ref. number for 4 pieces	h	Screws
9.3777.2011	24	M 12x45 DIN 912
9.3777.3011	27	M 12x45 DIN 912
9.3777.3021	27	M 16x50 DIN 912



Ring bolt DIN 580

For easy mounting of machine vices and clamping systems on machine tools.

Ref. number	g	d
1.0580.0010	M10	25
1.0580.0012	M12	30
1.0580.0016	M16	35

Example for application

