

NCNCNC  
NCNCNC  
NCNCNC  
NCNCNC  
NCNCNC  
NCNCNC  
NCNCNC  
NCNCNC  
NCNCNC  
NCNCNC  
NCNCNC  
NCNCNC  
NCNCNC  
NCNCNC  
NCNCNC  
NCNCNC  
NCNCNC  
NCNCNC

**NC**

NCNCNC  
NCNCNC  
NCNCNC  
NCNCNC  
NCNCNC  
NCNCNC  
NCNCNC

NCNCNC

NCNCNC

NCNCNC

NCNCNC

NCNCNC

NCNCNC

**UNC**

NCNCNC

NCNCNC

NCNCNC

NCNCNC

NCNCNC

NCNCNC

NCNCNC

NCNCNC

NCNCNC

NCNCNC

NCNCNC

NCNCNC

NCNCNC

NCNCNC

NCNCNC

NCNCNC

NCNCNC

NCNCNC

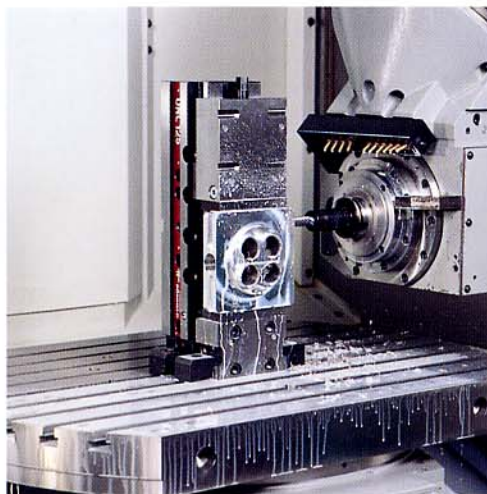
NCNCNC

NCNCNC

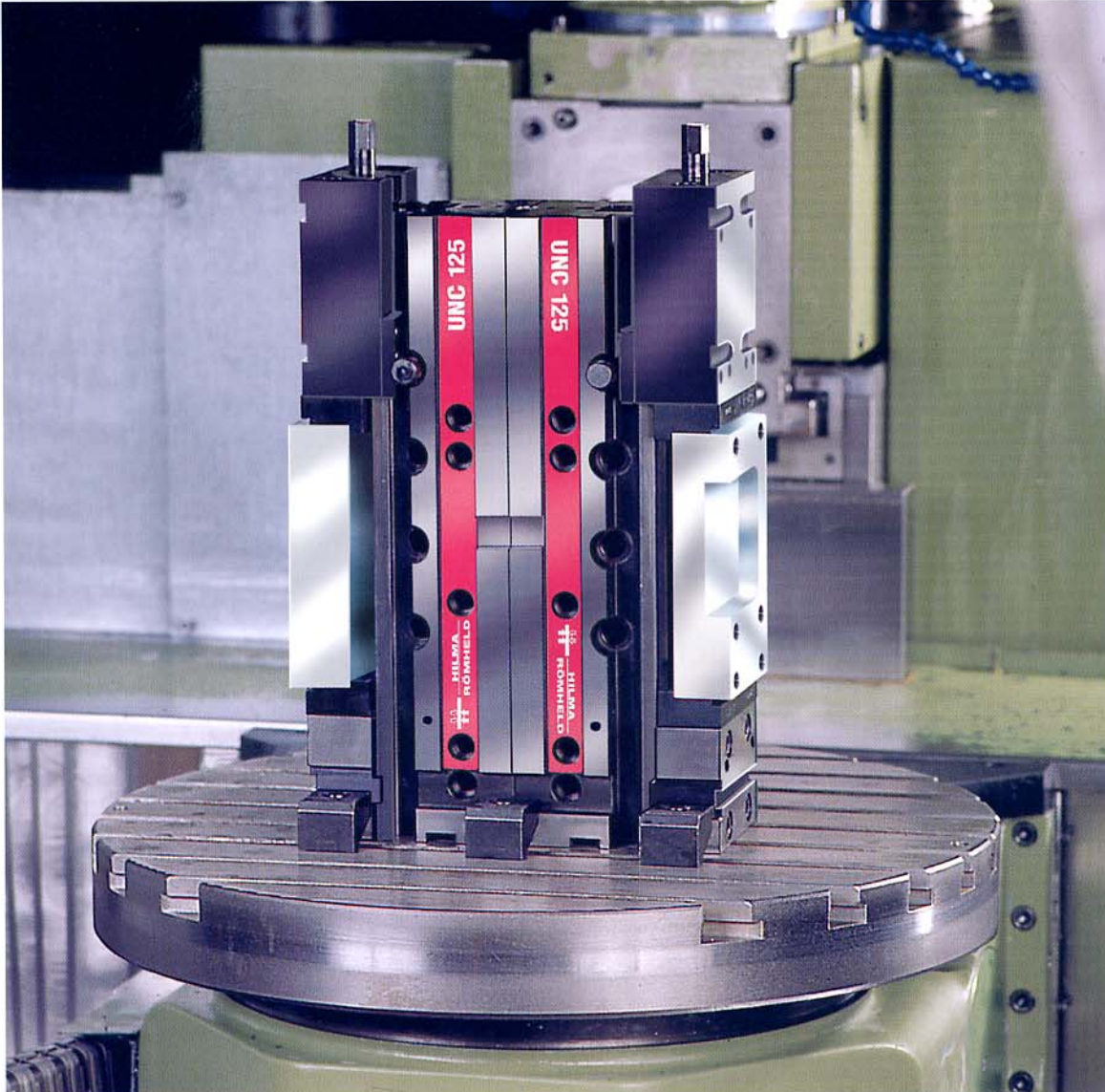
NCNCNC

## UNC Machine Vice

mechanical-hydraulic



## UNC Machine vice, mechanical-hydraulic



Vertical arrangement of 2 UNC machine vices

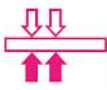
Universal NC machine vices have been engineered for use in machine tools in horizontal, vertical and lateral clamping applications.

This product line is suitable for a multitude of clamping tasks in the field of die and mould making, for the construction of jigs and fixtures as well as for normal production.

Benefits of the mechanical-hydraulic system: supported by the hydraulic system, the clamping force is built up safely and with effortless ease using the crank handle.

The clamping force which is infinitely variable over the whole range allows for easy adaptation to the machining task.

- ◆ Use in horizontal, vertical and lateral clamping applications, to suit specific requirements
- ◆ Base in all-steel design, ground on all sides, extremely resistant to deformation; guideways inductively hardened
- ◆ Quick positioning and easy fastening to the machine bed using keyways 20H7, screws and clamping claws
- ◆ Excellent clamping performance in combination with the Q.I.S. quick jaw insert system (optional extra)



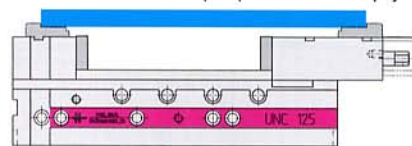
**HILMA  
RÖMHELD**

*Clamping with system*



1. Keyways in longitudinal direction, across the length and on the face for quick positioning
2. Threaded holes for lateral clamping applications
3. Clamping edge for of clamping claws used in vertical and horizontal clamping applications
4. Keyways and threaded holes on slide and fixed jaw for accommodating standard jaws or special jaws when the clamping range is to be extended
5. Reference and positioning surfaces precisely ground
6. Slide with integral brake for load relief in vertical clamping applications
7. Q.I.S. jaw insert system as optional extra

Standard version prepared for step jaw inserts



Other possible clamping applications:



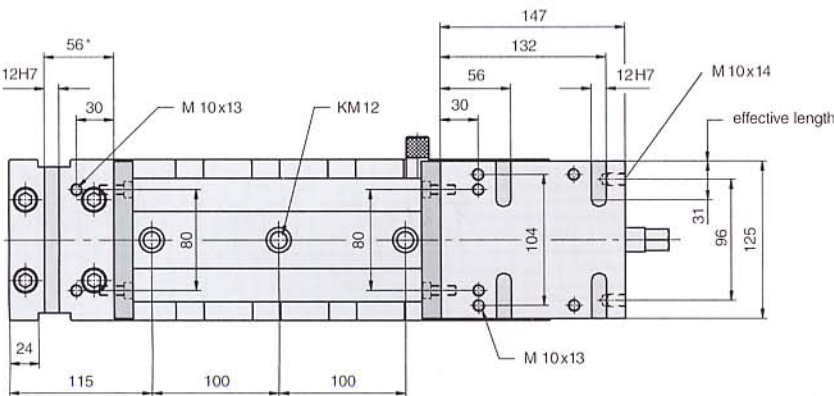
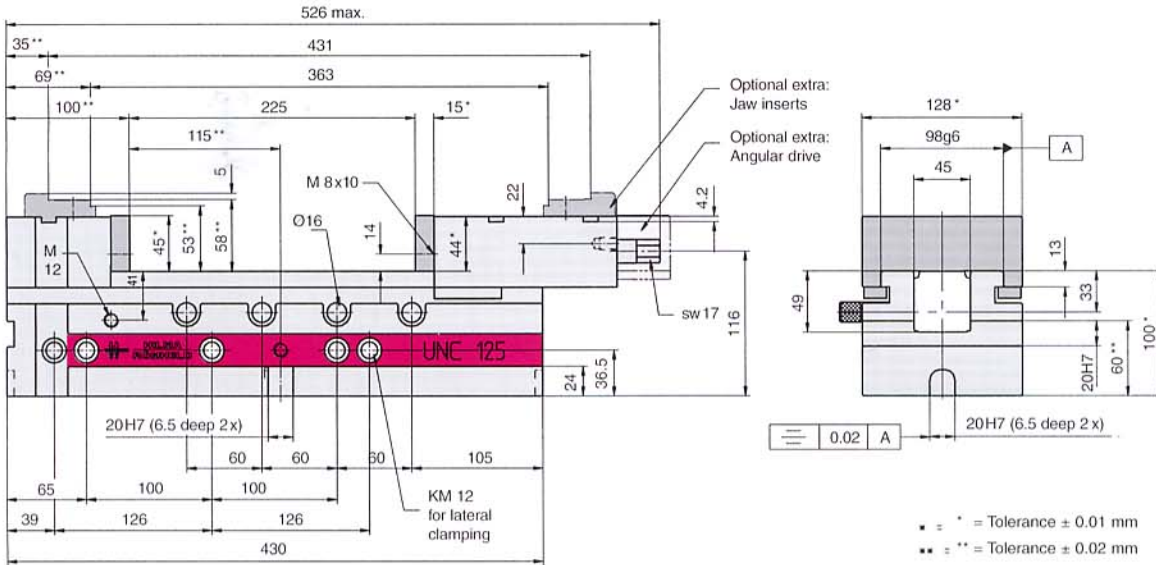
Horizontal fastening using screws M12 (in the centre) or clamping claws



Horizontal fastening on the right or on the left side using screws M12

**2.3090**

## Technical data



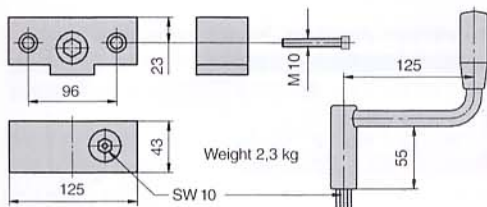
Scope of supply:  
reversible standard jaws,  
plain / serrated,  
crank handle,  
operating instructions

Clamping force max.	40 kN
Effort on the crank	75 N
Crank throw	100 mm
Weight	40 kg
Part no. 9.3093.0203	

### Angular drive

Part no. 9.3294.0605

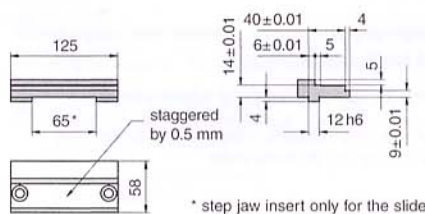
with crank handle and fastening screws. Maintenance-free.  
Recommended when normal operation is difficult or even impossible. Ideal for retrofit.



### Step jaw inserts

for extra-large clamping ranges, with screws.

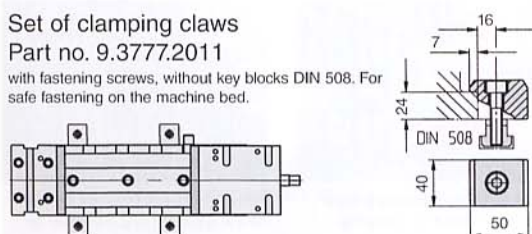
for fixed jaw Part no. 9.3284.0301  
for slide Part no. 9.3284.1301



### Set of clamping claws

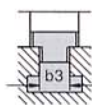
Part no. 9.3777.2011

with fastening screws, without key blocks DIN 508. For safe fastening on the machine bed.



### Set of key blocks DIN 6323 (2 blocks = 1 set)

Part no.	Keyway b3 in the bed
9.3917.4121	14h6
9.3917.4141	18h6



For exact adjustment of the universal NC machine vice, the key blocks are simply inserted in the keyway on the machine bed.