

Compact, universally usable machine vice for concentric precision clamping of cubic and cylindrical workpieces.

A precision trapezium threaded spindle with right-hand/ left-hand thread guarantees the absolutely concentric synchronism.

Workpieces can be concentrically clamped with repetitive precision - independantly of their exterior tolerance.

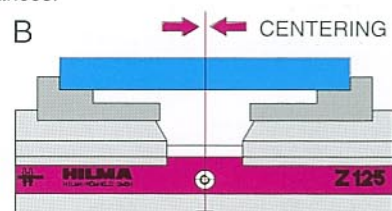
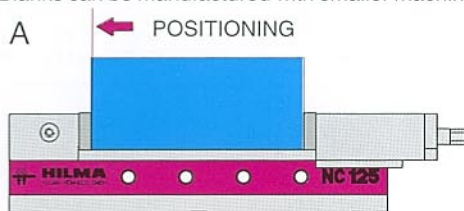
Application on all machine tools as well as at fixtures.

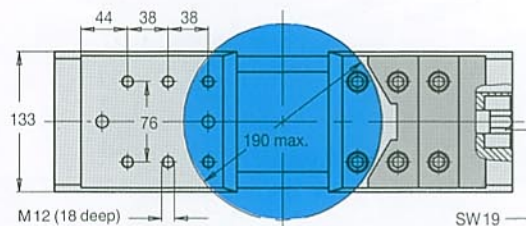
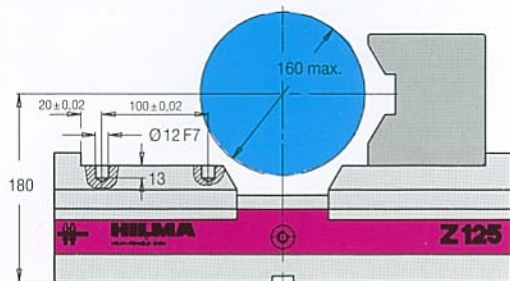
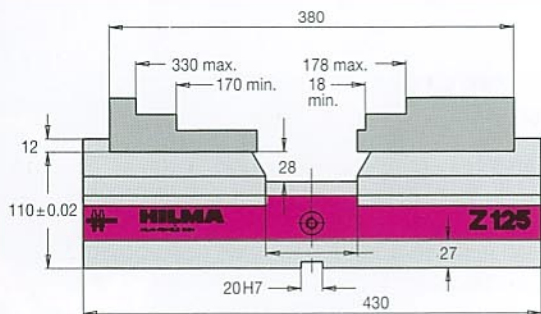
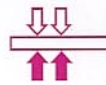
- ◆ Highly repetitive concentric and clamping precision; high clamping force
- ◆ Compact and very stable all-steel construction. Guiding parts and spindle hardened and ground
- ◆ Spindle area is protected in every jaw position against dirt, swarf and coolants
- ◆ Constant length; very large clamping ranges
- ◆ Mounting positions: any



**Advantages of concentric clamping:** Machine vices position and clamp workpieces with influence of the exterior contours at one side against a stationary jaw (A).

In the case of concentric machine vices two movable jaws centre and clamp the workpiece with influence of the exterior contours exactly in a predetermined axis of symmetry (B). Casting, forging or machining tolerances have no influences on the desired workpiece position. Blanks can be manufactured with smaller machining allowances.





### Technical data :

Clamping force/torque	30 kN / 200 Nm
Clamping stroke per clamping slide	42 mm
Jaw width	125 mm
Centring precision for the whole clamping range	0.04 mm
Clamping repeatability	0.01 mm
Crank	Spanner size 19, radius 160 mm
Weight	32.5 kg
Weight with hydraulic motor	42 kg

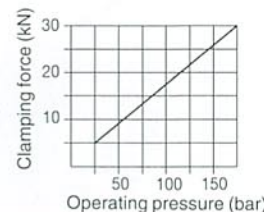
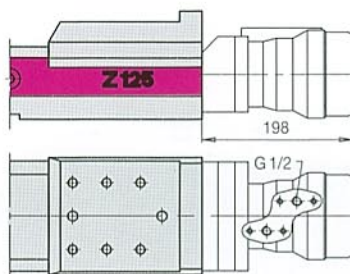
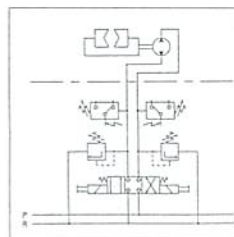
Concentric vice with crank  
Part-no.: 9.3523.0201

Concentric vice with hydraulic motor  
Part-no.: 9.3523.1201

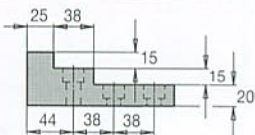
### Drive with hydraulic motor

Opening and closing speed  
12.5 mm/s at flow rate Q = 10 l/min.  
Hydraulic power unit with and without control on request.

Additional equipment: hydraulic motor  
Part-no.: 9.3785.0301



## Standard jaws and accessories

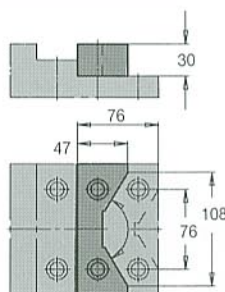
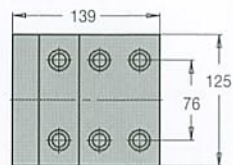


Support and clamping surfaces manufactured with a tolerance of  $\pm 0.01$  mm.

**Interchangeable jaws**  
hardened and ground, including fixing screws.

Clamping range 170 - 330 mm  
Part-no. 9.3784.0311 (2 off)

Clamping range 18 - 178 mm  
Part-no. 9.3784.0321 (2 off)



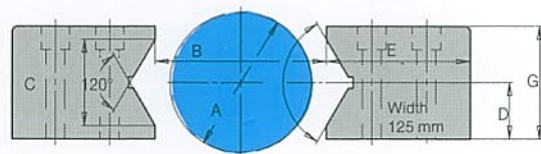
Only in combination with interchangeable jaws 9.3784.0311

**Vee jaws, for vertical workpiece position**

hardened and ground, including fixing screws.

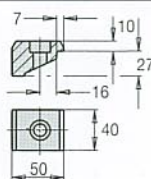
for dia. 56 up to dia 124 mm  
Part-no. 9.3784.1342 (2 off)

for dia. 122 up to dia 190 mm  
Part-no. 9.3784.1352 (2 off)



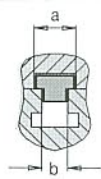
**Vee jaws, for horizontal workpiece position**  
hardened and ground, including fixing screws.

Part-no. for 2 off	Dimensions in mm					
	A	B	C	D	E	G
9.3784.2342	26 - 68	86	42	25 ± 0.01	147	50
9.3784.2352	68 - 116	118	68	40 ± 0.01	131	80
9.3784.2362	116 - 160	162	90	70 ± 0.01	109	124



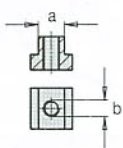
**Clamp set**  
with screws, 4 each

Part-no.	Screws
9.3777.3011	M 12 x 45 DIN 912
9.3777.3021	M 16 x 50 DIN 912



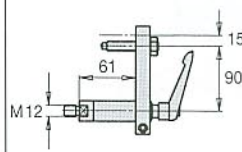
**Tenon block set; DIN 6323**  
(2 off)

Part-no.	a	b
9.3917.4121	20 h6	14 h6
9.3917.4141	20 h6	18 h6



**T-nut set (4 off)**

Part-no.	a	b
9.3777.3211	14	M 12
9.3777.3231	18	M 12
9.3777.3311	18	M 16



**Workpiece stop, pivoting**

Part-no.  
9.3291.0301